



Supraventricular Tachycardias with a Common Patient Burden

Patients with PSVT and AFib-RVR report feeling a loss of control

PSVT <i>(AVNRT and AVRT)</i>	AFib-RVR <i>(a subset of AFib)</i>
<ul style="list-style-type: none"> ✔ Regular rapid heart rate ✔ Typically 150 - 250 bpm 	<ul style="list-style-type: none"> ✔ Irregular rapid heart rate ✔ Typically 100 - 175 bpm
<p>✔✔ Episode frequency and duration is highly variable</p>	

Common Symptoms Include:

Palpitations

Chest pressure or pain

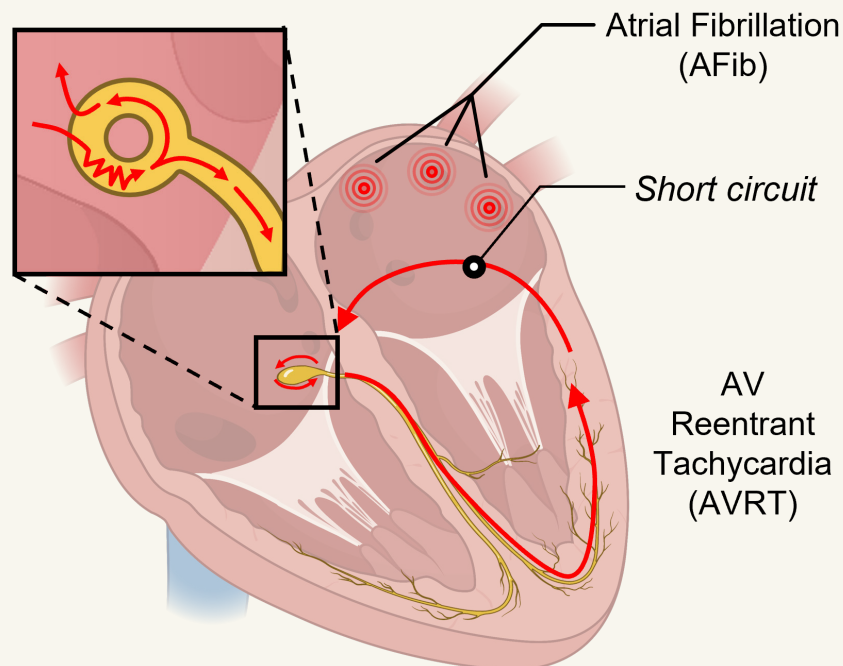
Fatigue

Shortness of breath

Light-headedness

Anxiety

PSVT = paroxysmal supraventricular tachycardia; AFib-RVR = atrial fibrillation with rapid ventricular rate
Source: Adapted from https://en.ecgpedia.org/index.php?title=Supraventricular_Rhythms, accessed 10/2022



For more information and to read stories about people living with PSVT, visit OutsmartPSVT.com



The Burden of Living with Paroxysmal Supraventricular Tachycardia (PSVT)



SVT Episodes

- ✓ Episodes are unpredictable in frequency and intensity
- ✓ Median frequency: 12-15 episodes/year



- ✓ ~60% of episodes last >10 min, 30% last >30 min
- ✓ ~70% of patients have multiple self-reported 'moderate' or 'severe' episodes annually (with an average of 3-6 symptoms per episode)

Impact on Patients



Emergency Department (ED) Use**

- ✓ 43% of patients visit the ED in the year following PSVT diagnosis



Emotional Burden*

- ✓ Worry and stress about future episodes (due to unpredictability)
- ✓ ~60% of patients indicated moderate or high anxiety between episodes



Functional Limitations*

- ✓ Patients self-restrict activities in which they fear getting an SVT episode (~15-20% of patients indicate aversion to travel or driving)

*VistaBioPharma and Blueprint Research Group, PSVT Patient Observational (Longitudinal) Study, n=247 US & UK PSVT patients. March 2019-Dec 2019.

**American Journal of Cardiology. Healthcare Resource Use and Expenditures in Patients Newly Diagnosed with Paroxysmal Supraventricular Tachycardia. 2020 Jan 15; 125(2):215-221

